



GENERATING POWER WITH LESS FUEL

SOUND BLAST



SB 60

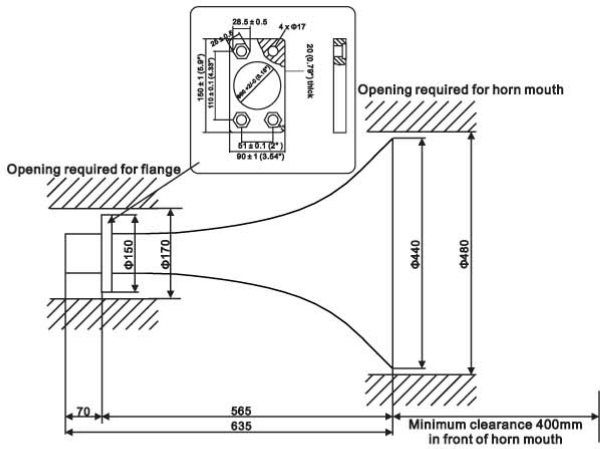
**SONIC SOOT BLOWERS
(Audible)**

SONIC SOOT BLOWING

Sound Blast Sonic Power Co., Ltd.

Professional in Sonic Soot Blowing

Clearances for SB60 horn mouth



Technical data

Frequency: ~170 Hz (at 20°C, 68°F)

Max. Sound Pressure Level (1m, 3.3 ft): <152 dB

Feeding Pressure during signal: ~0.7 MPa (~7 bar) (~101.5 psi)

Air consumption during signal(STP): ~100 l/s (~3.5 cfs)

Air consumption for cooling: ~2.5 l/s (~0.0875 cfs)

Maximum Temperature

Bell piece: 1300°C (2372°F)

Diaphragm housing: 500°C (932°F)

Solenoid valve: 80°C (176°F)

Miscellaneous

Air connection: Pipe thread 25.4mm (1")

Air supply piping:

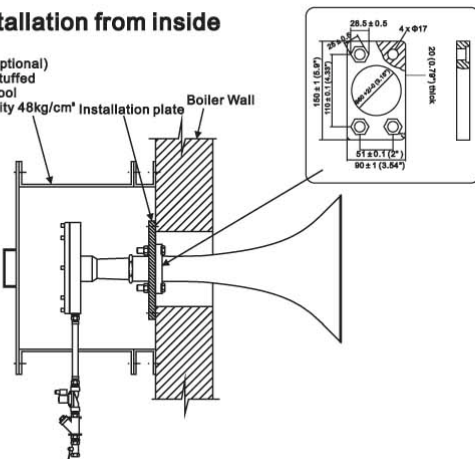
Minimum diameter 25.4mm (1") up to a maximum pipeline length of 10m (33ft) for single sonic soot blower

Solenoid valve Voltage: 230V/110V AC, 50Hz/60Hz

Weight: ~57kg (125lb)

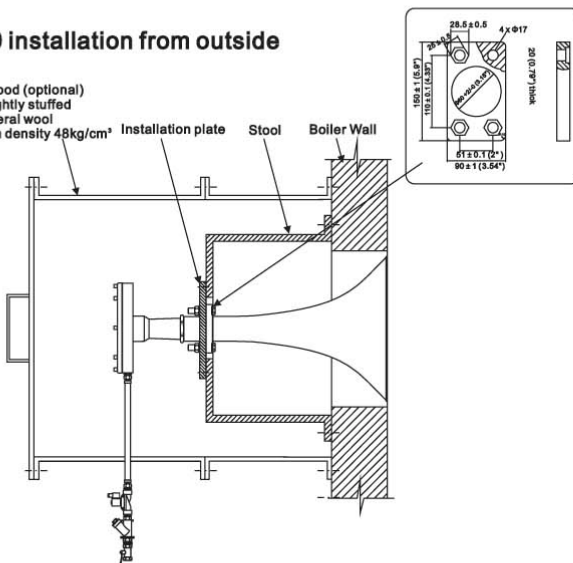
SB60 installation from inside

Sound hood (optional)
Inside tightly stuffed
with mineral wool
minimum density 48kg/cm³

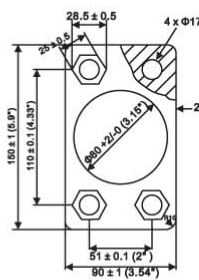


SB60 installation from outside

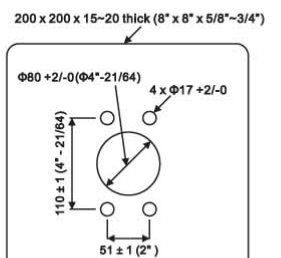
Sound hood (optional)
Inside tightly stuffed
with mineral wool
minimum density 48kg/cm³



SB60 Horn flange



SB60 installation plate



Your local **SOUND BLAST** contact is:



ing. Pavel Halfar - IPH Servis, Kunčičky u Bašky 327
739 01 Baška IČ:48765236 DIČ:CZ6501161700

②

SB60-07004