

# IPH Servis let

We make air as clean as possible.



**IPH Servis Morava s.r.o.**

A trading and engineering company with more than 30 years of experience.

# ABOUT THE COMPANY

**We are a trading and engineering company with more than 30 years of experience in the market.**

We deal with the supply, maintenance, installation, and inspection of smoke dampers, expansion joints technology, and technological units used for heat exchange surface cleaning of boilers.

We develop and supply components for emission reduction.

We design and manufacture our own high-pressure cleaning machine, as well as other customized technological machinery units according to the specific needs and requirements of our customers.



We provide complex design solutions, guarantee return on investment, and reduce the energy requirements for the operation of our equipment. We respect the requirements of our customers in terms of their operating cost reduction.

We are authorized representatives of three German companies – focused on the production of dampers, expansion joints, air blowers, and we also manufacture our own machinery components used for exhaust gas cleaning and emission reduction.

We develop original products based on the operational options and needs of our customers, we collaborate with research institutes and VŠB University, and we also develop and implement new solutions focused on increasing the operational efficiency.



## What we can do

### We supply new expansion joints

We design both standard and long-term sustainable solutions according to customer's needs. We offer custom-made projects, including the alignment of the actual state before and after installation. We are authorized suppliers of expansion joints from German manufacturer Frenzelit, with over 20 years of experience.

### We dismantle and install expansion joints

We dismantle outdated or damaged expansion joints and replace them with new ones. The installation includes the repair and cleaning of fixed and loose flanges, as well as eventual addition or replacement of fastening materials with new ones.

### We repair damaged areas, cracks, and crevices of expansion joints

We analyze the cause of the damage and suggest a suitable technological repair procedure. We always assess the economic aspect of the repair with respect to the expected lifespan of the repaired expansion joint. We can provide operational solutions in case of unexpected breakdowns. We have extensive experience in manufacturing our own expansion joints.

### We perform inspections of installed expansion joints

We check the current technical condition of the expansion joint and prepare a technical report, including drawing documentation.

## Why we do it

By providing suitable solutions and professional installation, we prevent contamination in the area around the expansion joint. We create conditions for safe working environment (safe passage around these narrow areas). This prevents the deterioration of the downstream technological parts or secondary air intake, which worsens emission limits and causes material degradation due to corrosion. There is no increase in the energy consumption at the flue gas fan. As far as fly-ash transport is concerned, a tight expansion joint prevents the formation of condensate, which maintains stable capacity of the fly-ash transport routes.

## Types

### Fabric Expansion Joints

These have the ability to absorb large expansions. They are usually based on glass fabric with various layers of coating materials (PTFE, VITON, EPDM, Hypalon, Neoprene, silicone, etc.), or they may be supplemented with additional layers of fabric, stainless steel mesh, etc. They can withstand extreme temperatures of up to 1200 degrees with the application of an insulating bolster.

### Rubber Expansion Joints

These expansion joints can handle corrosive liquids, large movements, vibrations, and a wide range of pressure and temperature levels. They use standardized flanges according to pipe size and pressure class.

### Metal Expansion Joints

Suitable for corrosive gases and liquids, they can withstand large movements, vibrations, and a wide range of pressure and temperatures levels. There are standardized solutions as well as custom-made solutions available to customers. These are usable for all types of applications.



Supply and replacement of a rubber expansion joint



Supply and replacement of a metal expansion joint, including metal flanges



Supply and installation of a fabric expansion joint



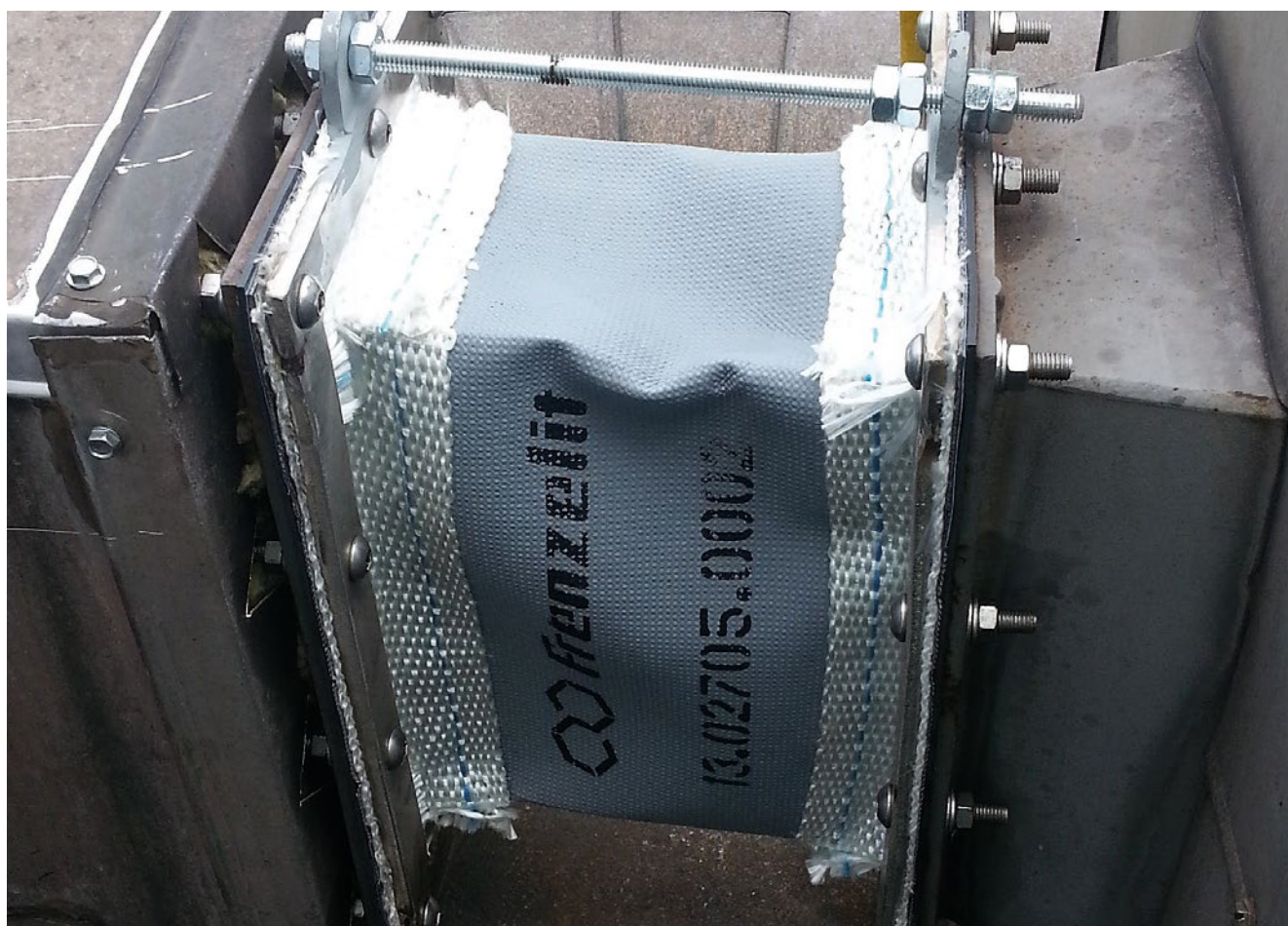
Production and installation of a fabric belt expansion joint instead of a flange type, including steel components



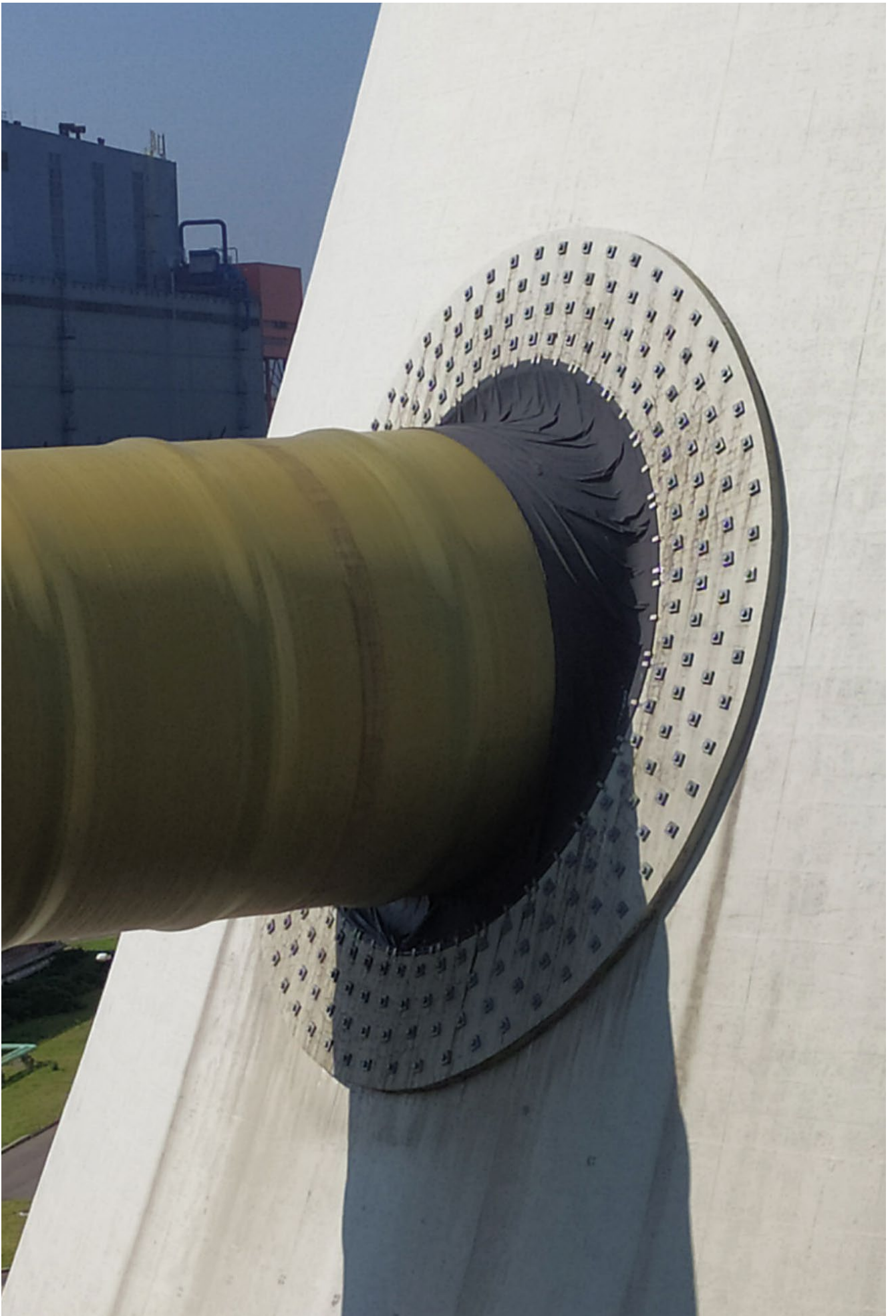
Supply and replacement of a broken rubber expansion joint with a new one, including pressure flanges



Supply and replacement of a metal expansion joint with a fabric one, flange type, including steel components (in the centre and on the right)



Supply and installation of a fabric expansion joint, including steel components



Supply and replacement of a cooling tower expansion joint



## What we do

### We supply new soot blowers

We propose the most suitable solution based on the customer's specifications. We supply soot blowers both for new boilers and for existing ones that need to improve the cleaning efficiency of problematic heat exchange surfaces. We are authorized suppliers of technological units and spare parts of Clyde Bergemann Company.

### We provide soot blower installations

In addition to installing new soot blowers, we also disassemble outdated or damaged soot blowers and replace them with new ones. The scope of delivery and installation is customized according to the agreement with the customer. Our delivery usually ends with the steam valve flange and the supply of a wall box, which is mounted on the boiler wall. Soot blower suspensions outside the boiler can also be designed, manufactured, and supplied upon agreement with the client.

### Troubleshooting and major repairs of soot blowers

We analyze the cause of damage and suggest the technological repair procedure. We always assess the economic aspect of the repair in relation to the expected lifespan of the repaired soot blower component. We supply new parts and refurbish existing ones. We also provide predictive maintenance based on regular inspections.

### Regular inspection

We conduct inspections at regular intervals with respect to the number of operating cycles of the soot blowers. We analyze the conditions and changes. The condition can also be partially monitored remotely after installing the monitoring equipment.

## Why we do it

Suitable delivery solution and professional installation reduce heat losses on heat exchange surfaces inside the boiler. We ensure the permeability of flue gas routes and reduce the consumption of the flue gas fan. We also reduce the wear of the steel elements of the boiler, including the pressure system tubes. All this improves the operational efficiency by reducing amount of unwanted shutdowns necessary for boiler cleaning and elimination of the creation of dangerously contaminated areas inside the boiler.

## Types

### Rotary Soot Blowers

This type of soot blowers is typically the most cost-effective solution. They are space-saving and work well with non-sticky fly-ash. They have lower energy consumption but, on the other hand, they also have lower cleaning efficiency. These soot blowers are suitable for smaller boilers.

### Semi-Retractable Soot Blowers

They represent a compromise for restricted space outside the boiler and in terms of soot blower performance. They provide higher cleaning performance than rotary soot blowers but do not achieve the same results as fully retractable soot blowers. They are suitable for loose, slightly sticky fly-ash. They have different moving trajectory, including screw, axial, or oscillating (swinging) type of movement. These soot blowers can be enhanced using SMART technology (programmable cleaning route).

### Fully Retractable Soot Blowers

These soot blowers achieve the highest possible efficiency compared to other types. They are suitable for various types of operations where sufficient space outside the boiler is required. They are ideal for more contaminated parts of the boiler. The cleaning routes of these soot blowers include screw, axial, or oscillating (swinging) type of movement. This type of soot blower can be enhanced using SMART technology (programmable cleaning route).

### Water Cannons, Water Showers

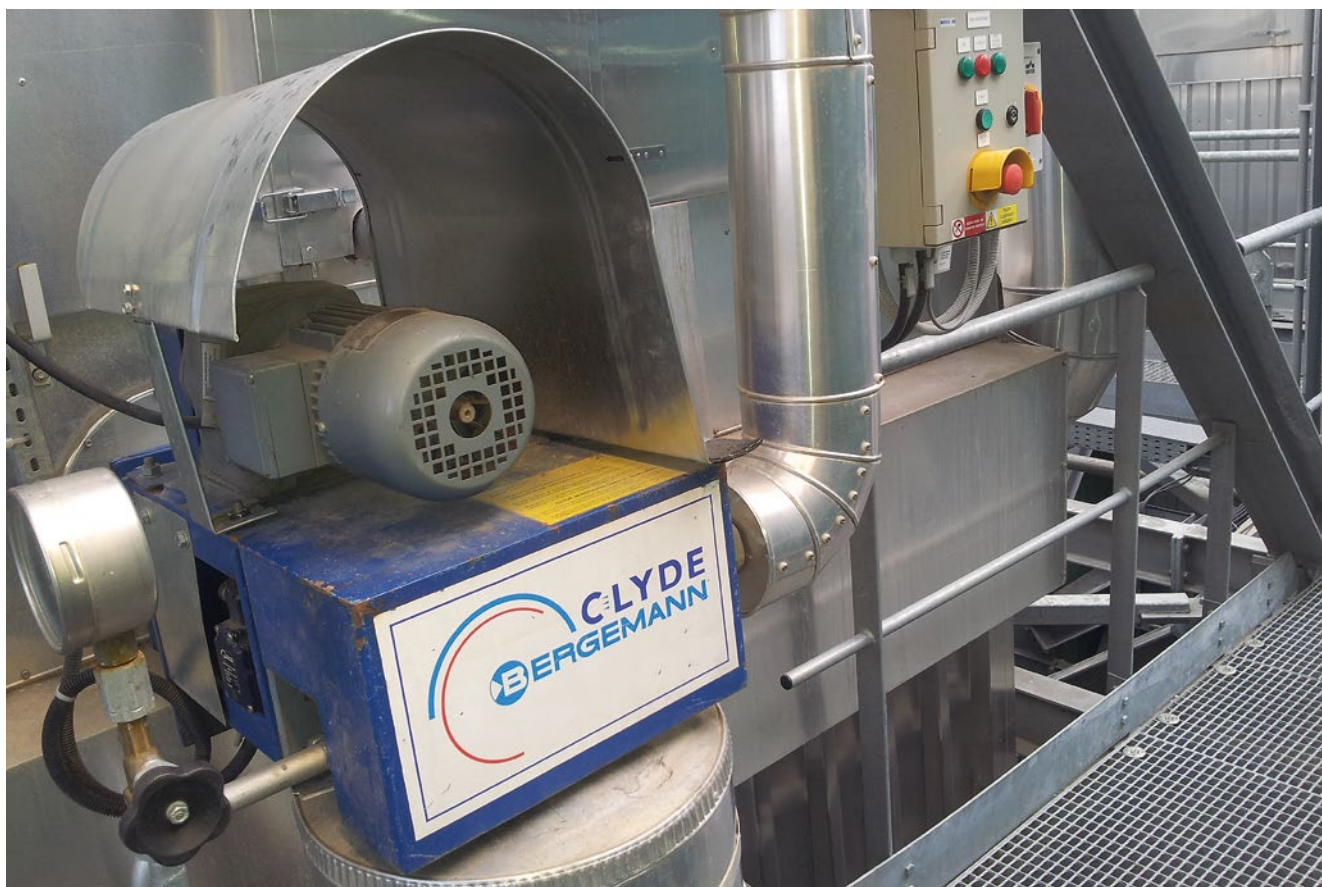
They clean the boiler combustion chamber walls and empty flues. They have low operational medium costs and cover a larger cleaning area. They allow directional cleaning.

### Sonic Soot Blowers

They are characterized by low operational costs and minimal space requirements. They generally have lower initial costs compared to other cleaning types. They are used in spaces where steam cleaning cannot be applied and are suitable for spatial cleaning.

### Shock Wave Cleaning

This type of cleaning is based on the release of compressed energy, which generates a shock wave. It is directional and partially also spatial type of cleaning. This type of cleaning typically has lower operational costs compared to other cleaning methods and it is suitable for small sources and for non-sticky ash only.



Inspection and regular maintenance of soot blowers



Supply of fully retractable soot blowers



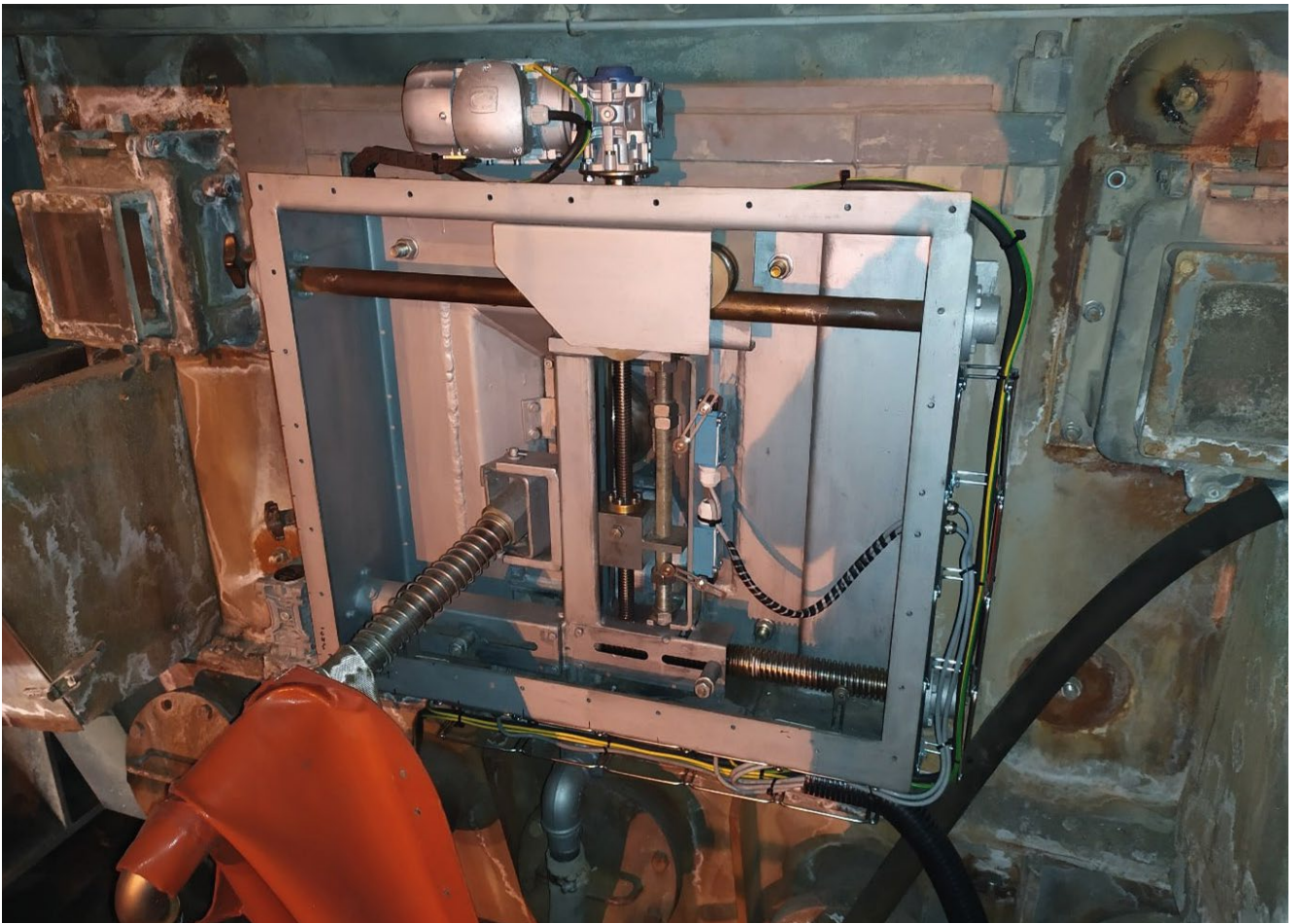
View of the internal part of the boiler before the installation of soot blowers



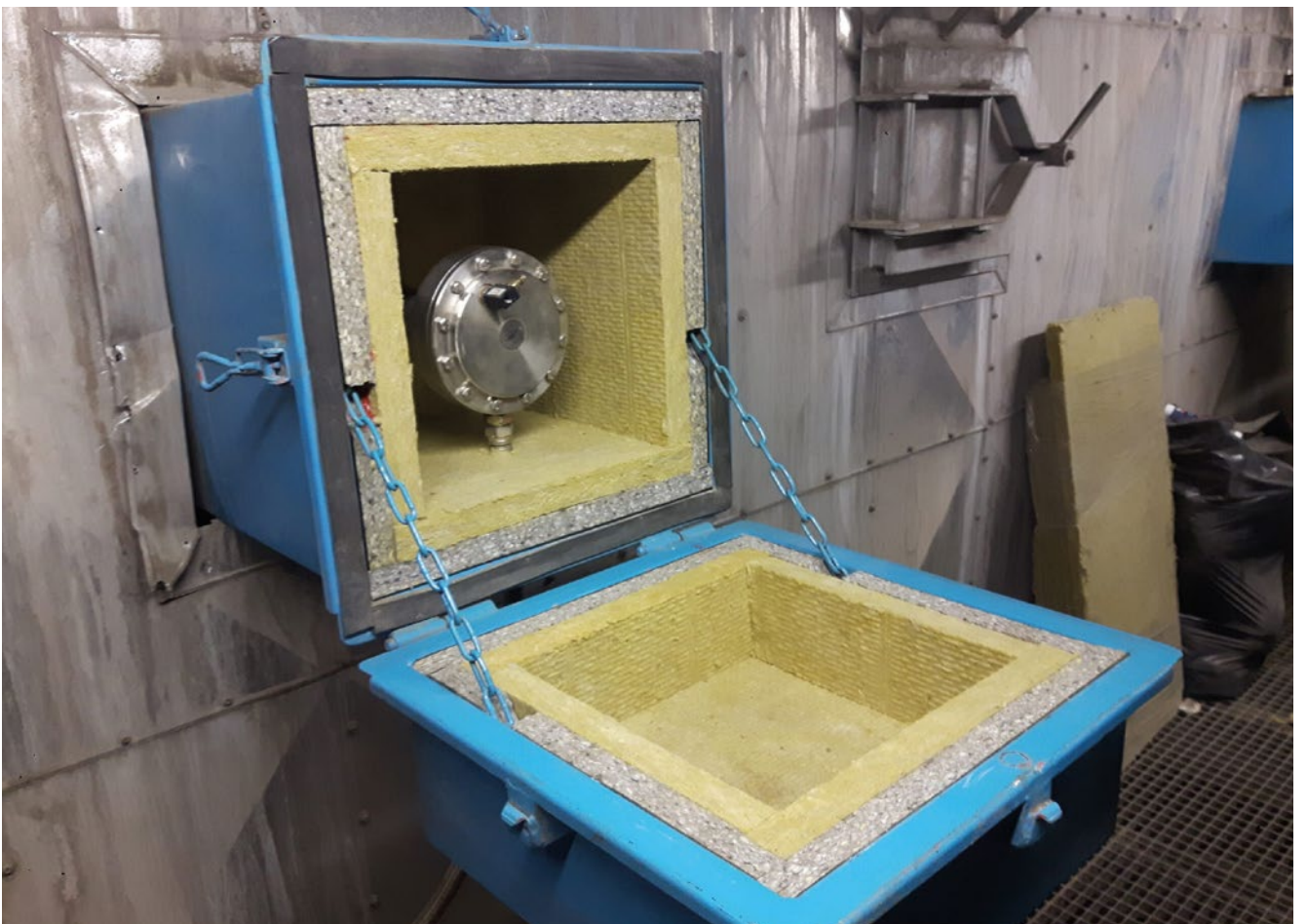
View of the internal part of the boiler after the installation of soot blowers



Repair of the soot blowing pipe in the internal part of the boiler



Supply and installation of a water cannon



Supply and installation of a sonic soot blower

## What we do

### We supply new dampers

We design the most suitable solutions based on the customer's specifications. We are an authorized representative of HMT damper manufacturer - Hebing Maschinen Technik GmbH. We manufacture industrial dampers of various geometric shapes, which can be used in any industry to control and/or close the flow of air/flue gases. Depending on the customer's requirements, installation setup, and operating conditions, the dampers are also equipped with electric, pneumatic, and hydraulic actuators. Other optional features, such as limit switches or sealing air fans can be installed as well. Depending on the operating environment, our solutions meet the safety and special requirements, such as:

- High temperatures (up to 1200°C)
- Extreme temperature changes
- Fluctuating pressure load
- High dust content
- Severe abrasion and corrosion stress

### Damper installations

This service includes the installation of dampers supplied by us, either as a turn-key option or under our supervision. We emphasize high-quality preparation and installation, efficient coordination, and maximum safety. The installation process also includes cold and hot tests after the technology is commissioned, including protocols.

### Regular inspection and maintenance

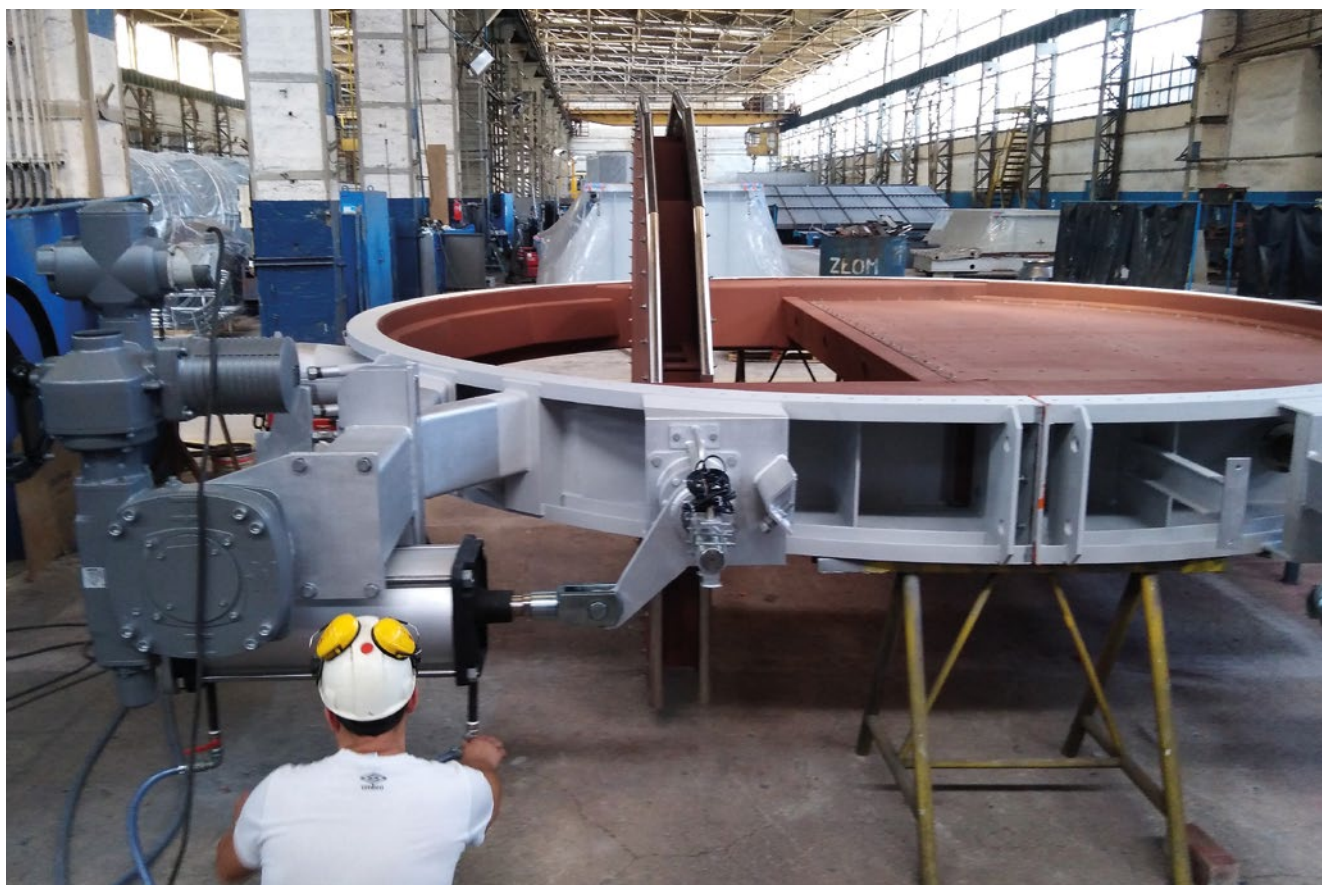
We carry out inspections at regular intervals, taking into account the number of operational cycles of the dampers and their operational load, while considering the elimination of risks associated with equipment malfunction. We analyze the technical condition and any changes compared to the previous inspection and the state of the new device. We conduct coordinated cold and hot tests of the dampers focused on operational safety. We predict the need for repairs. The output of the inspection is an inspection report.

### Damper repairs

Repairs follow the inspection process. We perform repairs on-site or in the workshop, depending on the scope of the repair, work efficiency, and time and space constraints. We are accustomed to planning the activities in advance based on the operator's operational needs and scheduled equipment shutdowns. 100% airtight dampers manufactured by HMT and Mannesmann Seifert represent a significant share of our repairs. We have detailed drawings of these products; however, we also repair dampers from other manufacturers. The repairs include the sealing air system and related MaR control elements. Cold and hot tests are carried out once the repair are completed, including the delivery of reports or technical documentation.

## Why we do it

To save as much energy as possible, production facilities must be equipped with regulating and shut-off dampers. The installed dampers ensure safety and environmental protection of workplaces. We use the most advanced technology for controlling the flow of flue gases, which is the foundation of modern, clean technology used to ensure safety and energy efficiency.



Supply of 100% airtight DN5000 dampers



Production and supply of dampers



Production of blanking plates and butterfly dampers for Denox



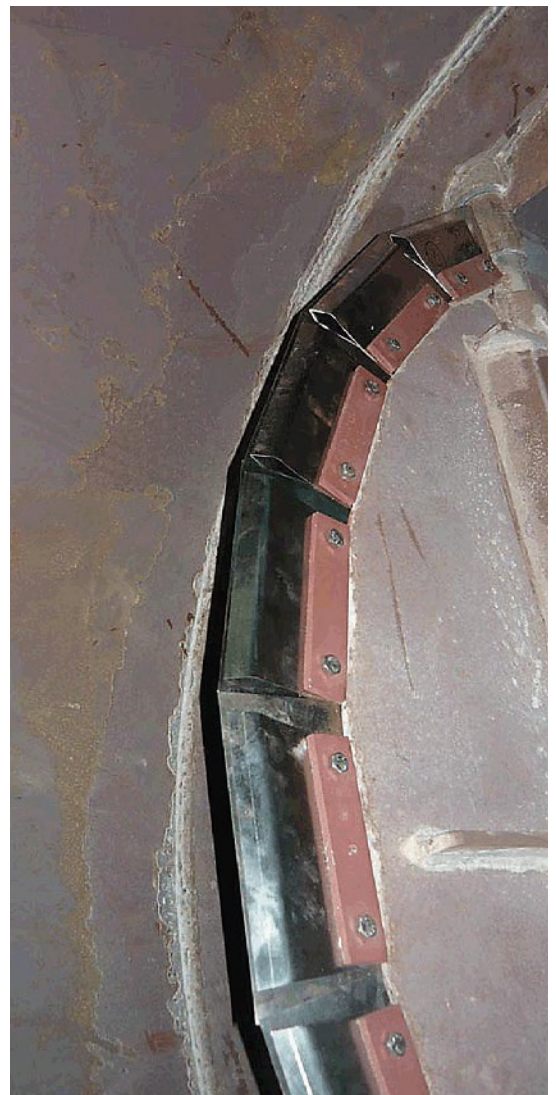
Supply and installation of dampers



Damper supply and installation



Production of 100% airtight damper with sealing air



Damper repair



## What we do

### We supply new shock wave generators

We design the most suitable solution on the basis of the customer's requirements. We supply generators for both new installations and existing ones that need to improve their cleaning efficiency of problematic heat exchange surfaces or flue gas routes. We are authorized suppliers of technology systems and spare parts from EKOZUB Company.

### Installation of shock wave generators

In addition to the installation of new generators, we also dismantle outdated or damaged generators and replace them with new ones. The scope of the supply and installation is agreed individually with the customer. The supply usually ends with the connection to the compressed air distribution system and the delivery and installation of the shock wave distribution system designed for the specific circumstances.

### Troubleshooting and major repairs of shock wave generators

We analyze the cause of the damage, and always evaluate the economic side of the repair based on the expected lifespan of the repaired part of the generator. We are able to return the generator back to its operational conditions using modular part replacement approach. We perform preventive maintenance based on regular inspections.

### Regular inspection

Inspections are carried out at regular intervals with respect to the number of operating cycles of the generator. We analyze the conditions and changes and optimize the maintenance frequency.

## Why we do it

We reduce heat losses on the heat exchange surfaces inside the boiler by using the right supply solution and professional installation. We ensure the permeability of flue gas routes, and we also reduce the consumption of the smoke fan. Additionally, we reduce the wear of steel parts of the boiler, including the pressure system pipes. All these aspects improve operational efficiency, by reducing the number of unwanted shutdowns necessary for boiler cleaning and by eliminating the creation of dangerously polluted areas inside the boiler or by reducing the permeability of the flue gas routes.



Installation of shock wave generator



Supply and installation of shock wave generator



Supply and installation of shock wave generator



Supply and installation of shock wave generator

## What we do

### We supply flue gas route sealing

We provide solutions allowing airtight separation of the flue gas route in a time-efficient manner. We prepare the most suitable reusable solution based on customer requirements. We are the suppliers of DuctBalloon products.

### We prepare conditions for sealing installation

In addition to supplying the sealing itself, we design and implement the modifications needed to install the sealing. The scope of delivery is customized according to the agreement with the customer. Our delivery usually ends with the provision of sealing and the adjustment of the position for sealing installation.

### We repair damaged seals

We locate the damage. We propose a repair procedure. We always assess the economic aspect of the repair based on the expected lifespan of the sealing. In the case of complex damage, we carry out the repair in the workshop.

### We provide professional packing of the sealing

We provide professional packing of the sealing before storage according to agreement with the customer.

## Why we do it

We reduce the time needed to separate the individual parts of the flue gas route according to requirements by designing the sealing and modifying the installation position. We reduce the resources necessary to seal off the flue gas sections of the technology. We increase the safety of workers performing the maintenance in a separated part of the flue gas route. All of this contributes to operational efficiency, reduction of time and efficient performance of flue gas route maintenance during the shutdown of the entire plant or a part of it.



DuctBalloon installation



DuctBalloon delivery



DuctBalloon delivery



IPH Servis Morava, s.r.o.  
Baška 455  
Baška 739 01

Vyřizuje / linka

Y.Sekeráková / + 420 596 609 440

Ostrava 25. května 2020

## Hodnocení dodavatelů skupiny Veolia Energie za rok 2019

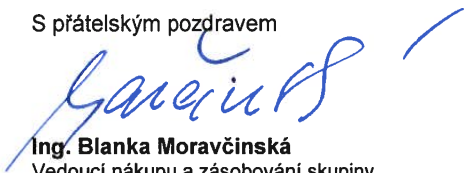
Vážení obchdní partneři,

ráda bych Vás informovala o tom, že v rámci každoročního hodnocení dodavatelů naší skupiny Veolia Energie ČR za rok 2019 byla spolupráce s vaší firmou hodnocena celkově průměrnou známkou 1.

Ráda bych vám k tomuto výsledku poblahopřála a poděkovala za úspěšnou spolupráci, pro informaci doplňuji, že stupnice našeho interního hodnocení spolupráce s našimi dodavateli se pohybuje v rozmezí 1 – 4, přičemž 1=Výborný, 2=Spolehlivý, 3=Dobrý, 4=Nevyhovující.

Doufám, že výsledek našeho interního hodnocení bude pro vás příjemnou zpětnou vazbou. Ráda bych vám popřála hodně obchodních úspěchů, těšíme se na další spolupráci.

S přátelským pozdravem



**Ing. Blanka Moravčinská**  
Vedoucí nákupu a zásobování skupiny  
Veolia Energie ČR

Tel.: + 420 596 609 101  
Mobil: + 420 602 792 654  
E-mail: [blanka.moravcinska@veolia.com](mailto:blanka.moravcinska@veolia.com)

### **Veolia Energie ČR, a.s.**

Sídlo: 28. října 3337/7, Moravská Ostrava, 702 00 Ostrava  
Společnost zapsána v obchodním rejstříku vedeném Krajským soudem v Ostravě pod sp. zn. B 318.  
IČO: 451 93 410, DIČ: CZ45193410  
Tel.: + 420 596 609 111, Zákaznická linka: 800 800 860  
[www.vecr.cz](http://www.vecr.cz), [www.veolia.cz](http://www.veolia.cz)

**Držitel certifikátů:** kvality dle ČSN EN ISO 9001,  
environmentálního řízení dle ČSN EN ISO 14001,  
bezpečnosti a ochrany zdraví při práci dle ČSN  
OHSAS 18001, managementu hospodaření  
s energií dle ČSN EN ISO 50001.



Innovative by nature

[www.lenzing.com](http://www.lenzing.com)

*IPH Servis Morava, s.r.o.*

*Baška 455*

*739 01 Baška*

*Czech Republic*

*mobil:+420 725 494 937*

*tel.: +420 558 662 920*

*mail: [petra.krakovska@iph.cz](mailto:petra.krakovska@iph.cz)*

*web: [www.iph.cz](http://www.iph.cz)*

Lenzing Biocel Paskov a.s.  
Místecká 762  
739 21 Paskov, Česká republika  
[www.lenzing.com](http://www.lenzing.com)

Phone +420 558 46 2415

Fax

E-mail [b.grendysova@lenzing.com](mailto:b.grendysova@lenzing.com)

Ref.

Date 2020/05/05

#### Referenční dopis pro firmu IPH Servis Morava, s.r.o.


Společnost IPH Servis Morava, s.r.o. je naším dlouholetým, spolehlivým partnerem a dodavatelem v oblasti servisu, revize našich kotlů, kompenzátorů, ofukovačů a podobně. Již několik let zastřešuje celozávodní odstávku našeho závodu právě v této oblasti k naší velké spokojenosti. Mimo pravidelné servisní kontroly spolupracujeme také v oblasti oprav, renovací, úsporných opatření a samozřejmě dodávek náhradních dílů. Z největších zakázek mohu jmenovat např. dodávka rezonančních trubek, výměna lineárního pohonu WLB č. 4 -horizontálního včetně repase pohonu, dodávka kompenzátorů na výsypku elektro odlučovače, oprava a profylaxe WLB 01-06, úprava těsnící klapky elektrofiltru a mnoho dalších.

Firma IPH Servis Morava, s.r.o. je díky rámcové smlouvě, kterou máme podepsanou již řadu let schopná v případě havárie, poruchy, nečekané naléhavé události být na místě do 24 hodin.

Na společnost IPH Servis Morava, s.r.o. jsme se mohli vždy spolehnout, montéři a vedoucí technických skupin jsou pravidelně proškolení ve svém oboru a díky tomu mohou a také provádí servis na profesionální úrovni. Z těchto důvodů ji můžeme zodpovědně doporučit.

S pozdravem

**Barbora Grendysová**  
Purchasing Manager  
Purchasing Department

  
Lenzing Biocel Paskov a.s.  
Místecká 762  
739 21 P A S K O V -23-

6.5.2020

IČ: 26420317, DIČ: CZ26420317, Bankovní spojení: Raiffeisenbank, č. ú. 1015005474/5500, IBAN: CZ39 5500 0000 0010 1500 5474, Obchodní firma zapsána v obchodním rejstříku Krajského soudu v Ostravě v oddíle B, vložka 2488

## Referenční listina

**Zhotovitel:** IPH Servis Morava, s.r.o., Baška 455, 739 01 Baška  
Tel: +420 558 662 920  
E-mail: iph@iph.cz

**Objednatel:** Sev.en EC, a.s., K Elektrárně 227, 533 12 Chvaletice  
Tel: +420 702 136 746  
E-mail: v.stepanek@7.cz


**Předmět reference:**

Společnost IPH Servis Morava, s.r.o. je naším dlouholetým, spolehlivým partnerem a dodavatelem v oblasti servisu, revize u našich obou absorberů ABS1, ABS2. Již několik let zastřešuje celozávodní odstávku našeho závodu právě v této oblasti k naší velké spokojenosti. Mimo pravidelné servisní kontroly spolupracujeme také v oblasti oprav, renovací, úsporných opatření a samozřejmě dodávek náhradních dílů. Z největších zakázek mohu jmenovat např. opravy nerez vystělek absorberu HTD10, HTD20, oprava vstupního kouřovodu spalín ABS1, dodávka kompenzátoru DN5400, ND pro kouřovody kotlů K1 až K4 Chvaletice, dodávka ND klapky těsnícího vzduchu pro izolační a bypass klapky, revize vodních děl Diamond na kotli K3.

Firma IPH Servis Morava, s.r.o. je díky rámcové smlouvě, kterou máme podepsanou již řadu let schopná v případě havárie, poruchy, nečekané naléhavé události být na místě do 24 hodin.

Na společnost IPH Servis Morava, s.r.o. jsme se mohli vždy spolehnout, montéři a vedoucí technických skupin jsou pravidelně proškolení ve svém oboru a díky tomu mohou a také provádí servis na profesionální úrovni. Z těchto důvodů ji můžeme zodpovědně doporučit.

Ve Chvaleticích dne 4. 5. 2020

  
.....  
RNDr. Vladimír Štěpánek  
VO PoZ – kotelna a odsíření



SAKO Brno, a.s., Jedovnická 2, 628 00 Brno  
tel.: +420 548 138 111, fax: +420 548 138 102

Datum: 05.05. 2020

Věc: Referenční dopis pro firmu IPH Servis Morava, s.r.o.

Společnost IPH Servis Morava, s.r.o. je naším dlouholetým, spolehlivým partnerem a dodavatelem v oblasti servisu, revize našich ofukovačů, kompenzátorů a vibrátorů, oklepávacího systému a podobně. Již několik let zastřešuje celozávodní odstávku našeho závodu právě v této oblasti k naší velké spokojenosti. Mimo pravidelné servisní kontroly spolupracujeme také v oblasti oprav, renovací, úsporných opatření a samozřejmě dodávek náhradních dílů. Z největších zakázek mohu jmenovat např. výměna a revize kompenzátorů na kotlích K2 a K3, dodávka bezešvých kotlových trubek, montáž mechanického oklepového systému EKA pro kotle K2/K3 a mnoho dalších.

Firma IPH Servis Morava, s.r.o. je díky rámcové smlouvě, kterou máme podepsanou již řadu let schopná v případě havárie, poruchy, nečekané naléhavé události být na místě do 24 hodin.

Na společnost IPH Servis Morava, s.r.o. jsme se mohli vždy spolehnout, montéři a vedoucí technických skupin jsou pravidelně proškolení ve svém oboru a díky tomu mohou a také provádí servis na profesionální úrovni. Z těchto důvodů ji můžeme zodpovědně doporučit.

SAKO Brno, a.s.  
Jedovnická 2, 628 00 Brno  
IČ: 60713470, DIČ: CZ60713470

31

Pavel Křeček

provozní technik

Bankovní spojení: KB Brno-venkov, číslo účtu 790 33 621/0100, IČ: 60713470, DIČ: CZ60713470  
[www.sako.cz](http://www.sako.cz)





**Mondi Štětí a.s.**  
Litoměřická 272  
411 08 Štětí  
Czech Republic

**Věc: Ocenění pro firmu IPH Servis Morava, s.r.o. za HO2023**

Vážení,

dovolujeme si Vám jménem společnosti Mondí vyjádřit upřímné poděkování za Vaši spolupráci v průběhu hlavní odstávky 2023. Vaše nasazení, vysoká kvalita práce a spolehlivost jsou klíčovými faktory, které přispěly k úspěchu celé odstávky.

Oceňujeme, že jste kladli důraz nejen na výsledky Vaší činnosti, ale zároveň jste dbali dodržení bezpečnosti. Váš přístup k zajištění bezpečného pracovního prostředí a ochrany zdraví na pracovišti je příkladem pro ostatní a zároveň odrazem Vašeho profesionálního přístupu.

V rámci uznání Vaší mimořádné práce a přínosu k dosaženým výsledkům jsme se rozhodli ocenit Vás plaketou za vynikající spolupráci. Toto ocenění je symbolem našeho díky a uznání Vaší tvrdé práce, odhodlání a věrnosti společným cílům.

Těšíme se na další spolupráci v roce 2024 a věříme, že naše partnerství bude nadále prosperovat a přinášet ovoce v podobě úspěchů a vzájemného růstu.

S úctou,

za společnost Mondí Štětí

Ve Štětí, dne 19/2/2024

DocuSigned by:  
  
E30798A9CA484F4...  
**Mondí Štětí a.s.**  
Ing. Lucie Kozáková  
Procurement manager

DocuSigned by:  
  
81F0F23EE0043B...  
**Mondí Štětí a.s.**  
Ing. Pavel Husák  
Head of dedicated maintenance

**IPH Servis Morava s.r.o.**

Baška 455, 739 01 Baška | +420 558 662 920 | [www.iph.cz](http://www.iph.cz) | [obchod@iph.cz](mailto:obchod@iph.cz)